

NESPA ENTERPRISES INC.

2800 Richter Ave. Suite E
Oroville, CA 95966

Office: (888) 479-4677 Fax: (530) 534-9915
E-Mail: sales@tiledspas.com www.tiledspas.com

6'-6" ROUND

SCALE: 1/2" = 1'-0"

DATE: 6/27/02

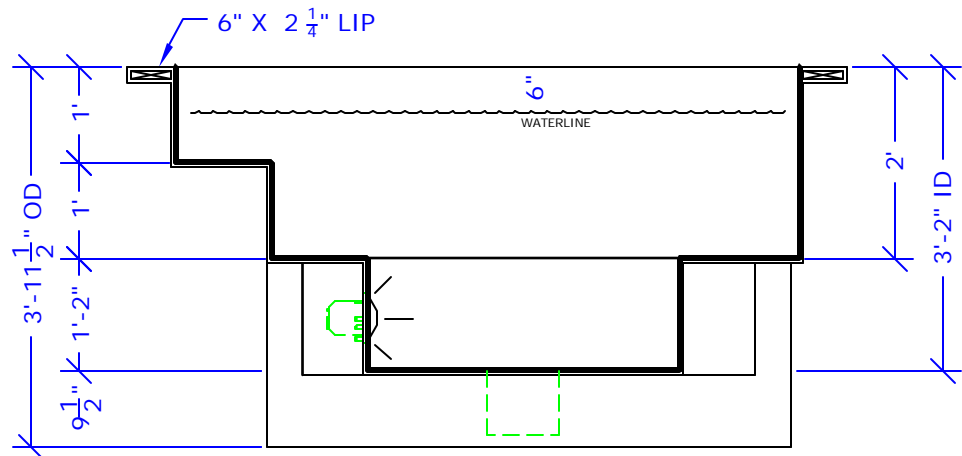
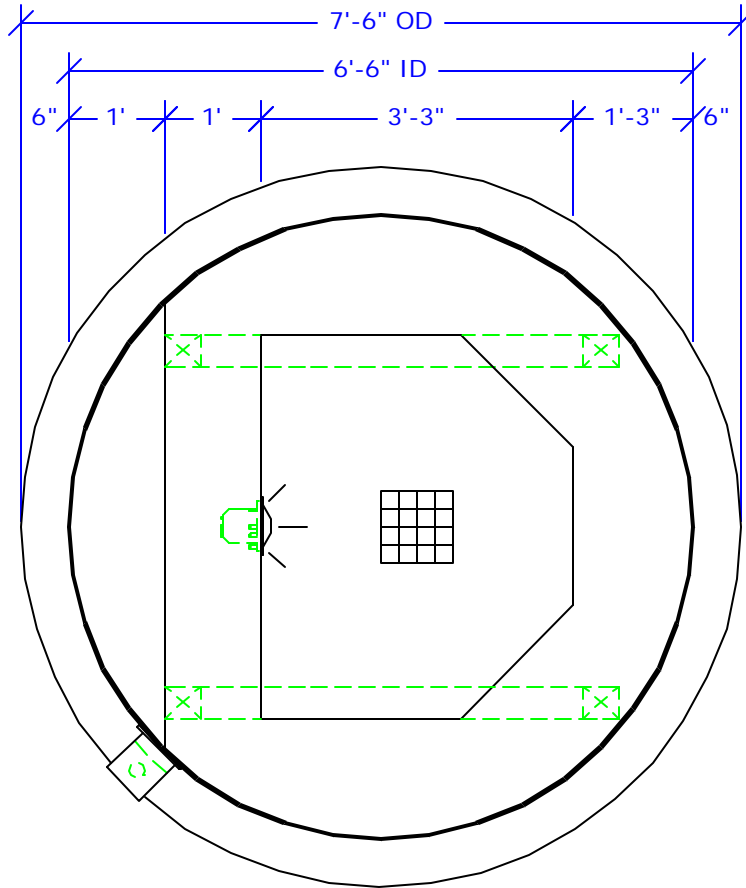
JOB :

RESIDENTIAL

TYP MFG SUPPORT STRUCTURE	
MAIN DRAIN	
	9" X 9"
LIGHT NICH	
JACUZZI SV FRONT ACCESS SKIMMER	

SPECIFICATIONS	
DRY WEIGHT: 1050 lbs.	
WET WEIGHT: 5815 lbs.	
WATER: 470 GALLONS	
SURFACE AREA: 33 sq.ft.	
IAPMO#: 1138	
FDA#: 2030305	

NOTE:
TILE MUST BE 2" X 2"



ALL DIMENSIONS SUBJECT TO 1/4" TOLERANCES

These drawings, concepts, and details contained herein are the original proprietary designs of NESPA ENTERPRISES, developed over many years of experience in the pool and spa industry and as such are protected by the copyright laws of the United States Government. Reproduction of any of the above without written permission to do so by NESPA ENTERPRISES, is illegal.